

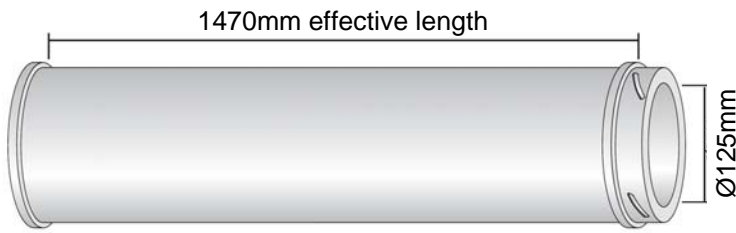
TWIN WALL FLUE Ø125MM FOR RADIANT HEATERS DIMENSIONAL DATA SHEET



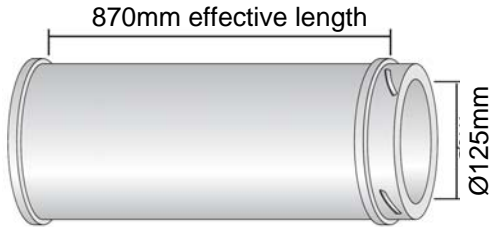
INDEX	Section
All Flue Components	1

WARNINGS

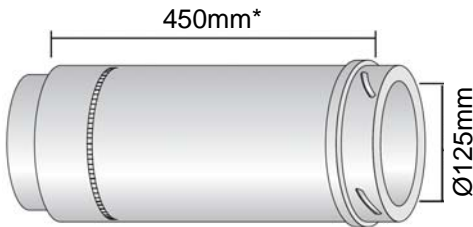
AmbiRad equipment must be installed and maintained in accordance with the relevant provisions of the Gas Safety (Installations and Use) Regulations 1998 for gas fired products. Due account should also be taken of any obligations arising from the Health and Safety at Works Act 1974 or relevant codes of practice.



Flue Pipe 1524mm. Part no. 7157



Flue Pipe 914mm. Part no. 7156

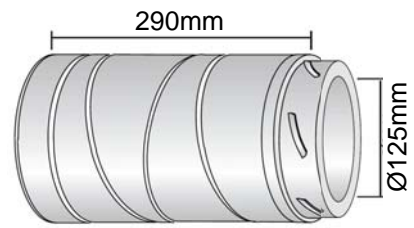


Adjustable flue. Part no. 7158

Slide over male end of previous pipe. Tighten jubilee clip.

*Effective length 50mm to 380mm. Min 40mm overlap.

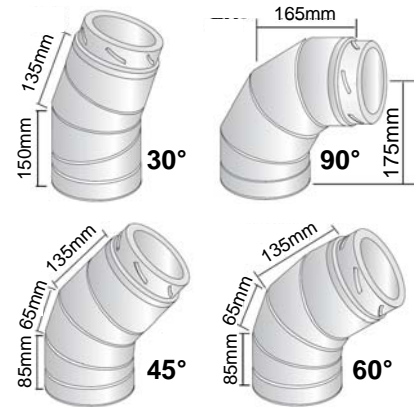
Note: Not to be used after bend!



**Adjustable 0°-90° Bend
Part no. 7166**

Rotate segments to create any angle. Bottom segment rotates enabling exact alignment of bend.

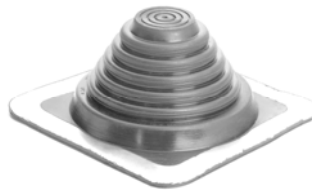
Creating standard angles will enable the following dimensions:



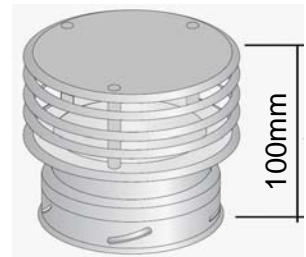
**Adapter.
Part no. 201882**
Fan to flue for forced linear 35-50kW models.



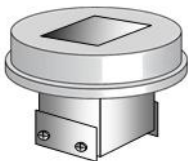
**Adapter.
Part no. 201881**
Fan to flue for forced linear 15-30kW models.



**Roof Flashing.
Part no. 7700H-1**



**Flue Cowl.
Part no. 7162**



**Adapter.
Part no. 7177-SUB**
Fan to flue for U tube and induced linear models.



**Adapter.
Part no. 7176-SUB**
Fan to flue for double linear 15-40kW models.



**Adapter.
Part no. 202365**
Fan to flue for double linear 45-50kW models.



**Adapter.
Part no. 201889**
Fan to flue for VSX heat exchanger.

Technical Support:

Tel: 01384 489 200

Fax: 01384 489 707

ambiradgroupsupport@tnb.com
www.ambiradgroup.co.uk

AMBIRAD
HEATING AND VENTILATION SOLUTIONS

AMBIRAD AIRBLOC NORDAIRNICHE BENSON

A Thomas & Betts Company. Registered in England No. 1390934. Registered office: 27/28 East Castle Street, London.

AmbiRad UK is a registered trademark of AmbiRad Limited. Because of continuous product innovation, AmbiRad reserves the right to change product specification without due notice.